



GAT MONTHLY MEMBERSHIP PROGRESS REPORT

Results as of: 8/31/2022

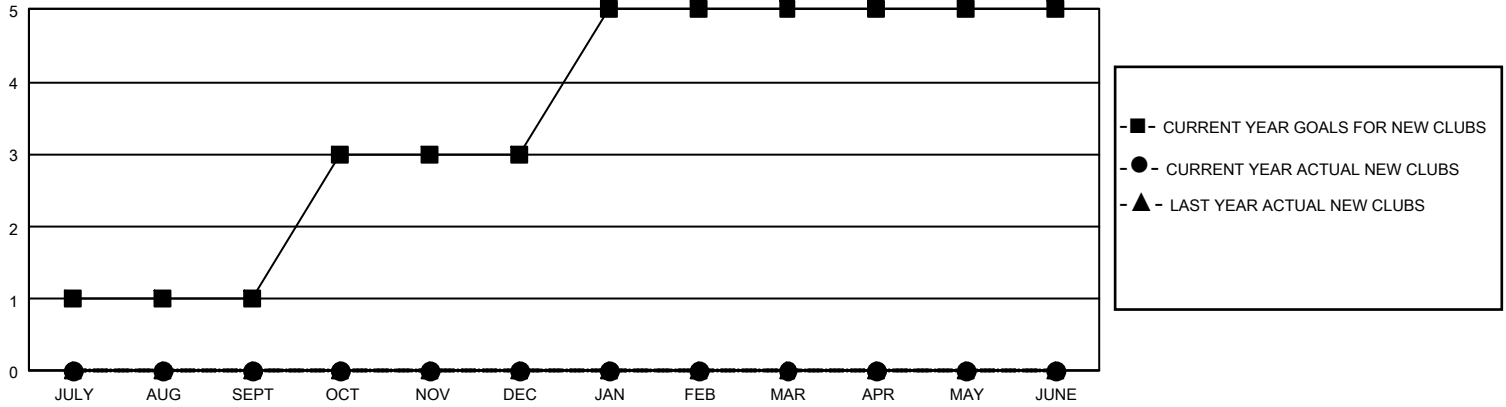
GMT Constitutional Area 2, Group C

REPORT DOES NOT INCLUDE CLUBS IN UNDISTRICTED AREAS.

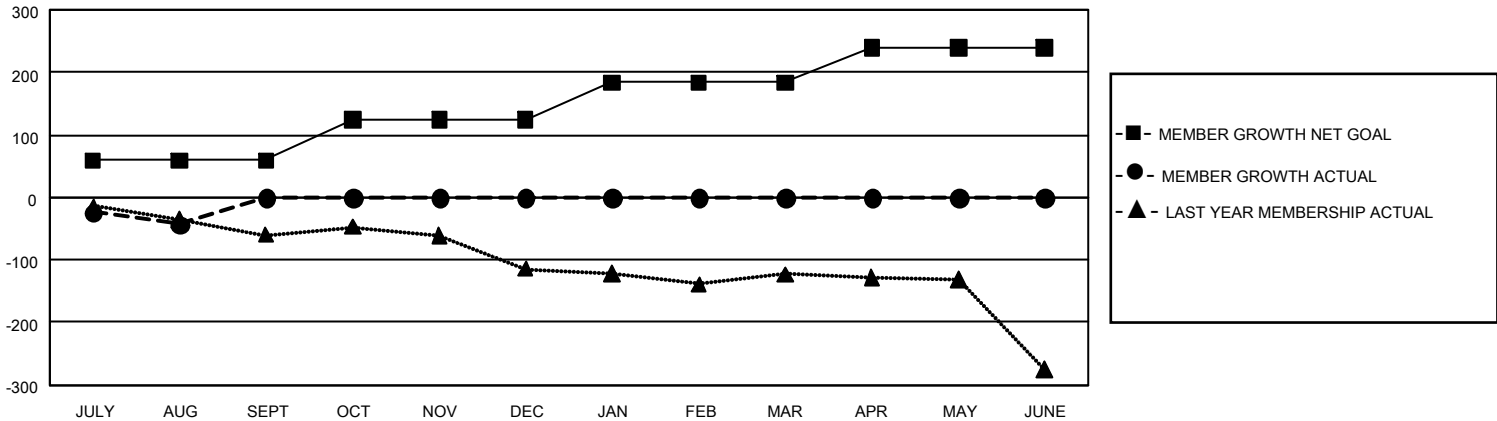
| Clubs | | | |
|-----------------------|---------------|-----------|---------------|
| RESULTS FOR 2022-2023 | | | |
| QUARTER | NEW CLUB GOAL | NEW CLUBS | DROPPED CLUBS |
| JULY/AUG/SEPT | 3 | 0 | 0 |
| OCT/NOV/DEC | 6 | 0 | 0 |
| JAN/FEB/MAR | 6 | 0 | 0 |
| APR/MAY/JUNE | 0 | 0 | 0 |

| Members | | | |
|-----------------------|------------------------|----------------------|--|
| RESULTS FOR 2022-2023 | | | |
| QUARTER | MEMBER GROWTH NET GOAL | MEMBER GROWTH ACTUAL | DROPPED MEMBERS ACTUAL (including transfers) |
| JULY/AUG/SEPT | 59 | 10 | 50 |
| OCT/NOV/DEC | 65 | 0 | 0 |
| JAN/FEB/MAR | 60 | 0 | 0 |
| APR/MAY/JUNE | 55 | 0 | 0 |

GOALS AND ACTUAL NEW CLUBS CUMULATIVE



GOALS AND ACTUAL MEMBERS CUMULATIVE



| | |
|------------------------|-----------|
| DROPPED CLUBS: 0 | |
| DROPPED MEMBERS | |
| DECEASED | 6 |
| CLUB CANCELLED | 0 |
| OTHER | 44 |
| TOTAL | 50 |

5 CLUBS OF 159 ADDED 1 OR MORE NEW MEMBERS

[CLICK HERE FOR CUMULATIVE MEMBERSHIP DATA](#)

| GENDER DISTRIBUTION | |
|---------------------------------|----------------|
| MALE | 2,239 (66.32%) |
| FEMALE | 1,137 (33.68%) |
| NON BINARY | 0 (0.00%) |
| PREFER NOT TO ANSWER | 0 (0.00%) |
| TOTAL FAMILY UNIT MEMBERS | 629 |
| FAMILY MEMBERS PAYING HALF DUES | 321 |